

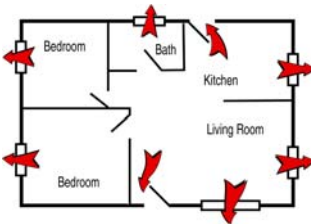
General Fire Safety

- ♦ Make sure you have working smoke alarms on every level of your home and outside every sleeping area. For maximum protection, place an alarm in each bedroom.



- ♦ Check the batteries in your smoke alarm monthly and replace as necessary. Better yet, replace your alarms with long-life, lithium battery-powered alarms. These alarms have a hush feature to silence nuisance alarms caused by cooking smoke or shower steam.

- ♦ Draw a fire escape plan using a floor plan of your home including all doors and windows. Determine at least two exits from every room. Designate a meeting place outside the house where everyone can gather after exiting. Practice the plan with your children, preferably at night.



- ♦ In case of an actual fire, get everyone out immediately and call 9-1-1 from a neighbor's phone.
- ♦ Instruct small children about the dangers of playing with lighters, matches, and/or any other type of fire. Teach your child how to call for help in emergencies. Reward an understanding of safety regarding fire.
- ♦ Know how to extinguish small fires on the kitchen stove. (Simply sliding a lid over a skillet of burning grease often will extinguish a pan fire.)

Tualatin Valley Fire & Rescue

serves approximately 400,000 citizens within portions of Clackamas, Multnomah, and Washington counties. For additional fire prevention information please contact your Division Office:

NORTH DIVISION OFFICE

14480 SW Jenkins Road
Beaverton, OR 97005-1152
503-356-4700

Serving the cities and communities of Aloha, Beaverton, Skyline, Tigard, and surrounding areas of unincorporated Multnomah and Washington counties.

SOUTH DIVISION OFFICE

7401 SW Washo Court, Suite 101
Tualatin, OR 97062-8350
503-612-7000

Serving the cities and communities of Durham, King City, Rivergrove, Sherwood, Tualatin, West Linn, Wilsonville, and surrounding areas of unincorporated Clackamas and Washington counties.



We're **Your** Fire Department

www.tvfr.com

P.A.S.S. the Fire Extinguisher!



Choosing and Using a Portable Fire Extinguisher



Learn the P-A-S-S Method

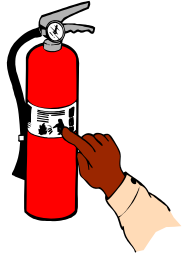
Stand 5 to 6 feet away from the fire with a clear path to an exit behind you.



Portable Extinguishers

A fire extinguisher is basically a storage container for agents that put out fires. Common agents are dry chemicals and water. Portable fire extinguishers are designed to put out small fires, not large ones.

Extinguisher Classifications



The letters on the label of an extinguisher indicate what type of fire to use it on (see below). Make sure to use the right extinguisher for the type of fire.



Ordinary Combustibles

Cloth, Paper, Plastics, Rubber, Wood



Flammable Liquids

Gasoline, Grease, Lacquers, Oil, Paint



Electrical Equipment

Energized Electrical Equipment, Fuse Boxes, Wiring



Combustible Metals

Magnesium, Sodium

Pull the pin.

Aim at the base of the fire.

Squeeze or press the handle.

Sweep from side to side at the base of the fire until it goes out.

Remember, fire extinguishers are designed to put out SMALL fires!

Most portable extinguishers are designed to last about 10 to 18 seconds.

If the fire gets large, do not attempt to extinguish it - get out and stay out!

When exiting, close doors behind you to slow the spread of the fire.

Call 9-1-1 from a safe place.